

# EDIFICIO C

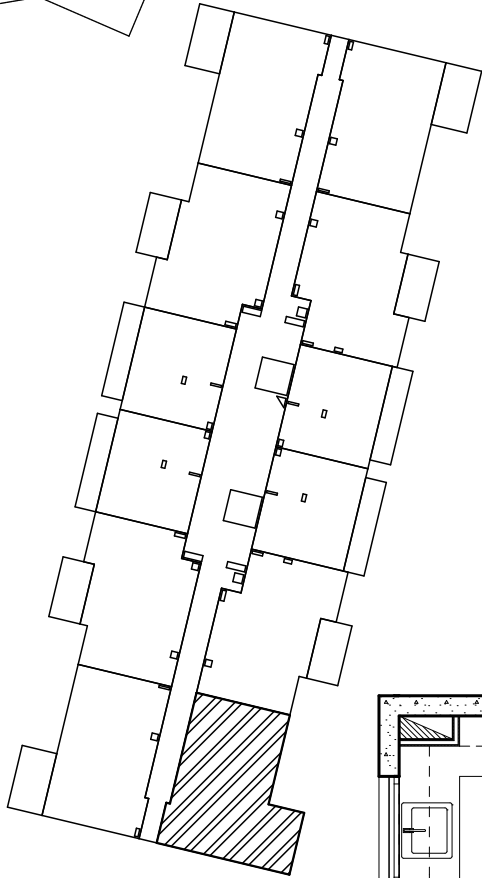
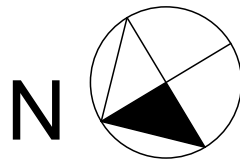
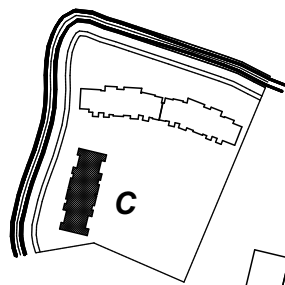
## Departamento

# 6

## 6L

### Orientación

## Sur



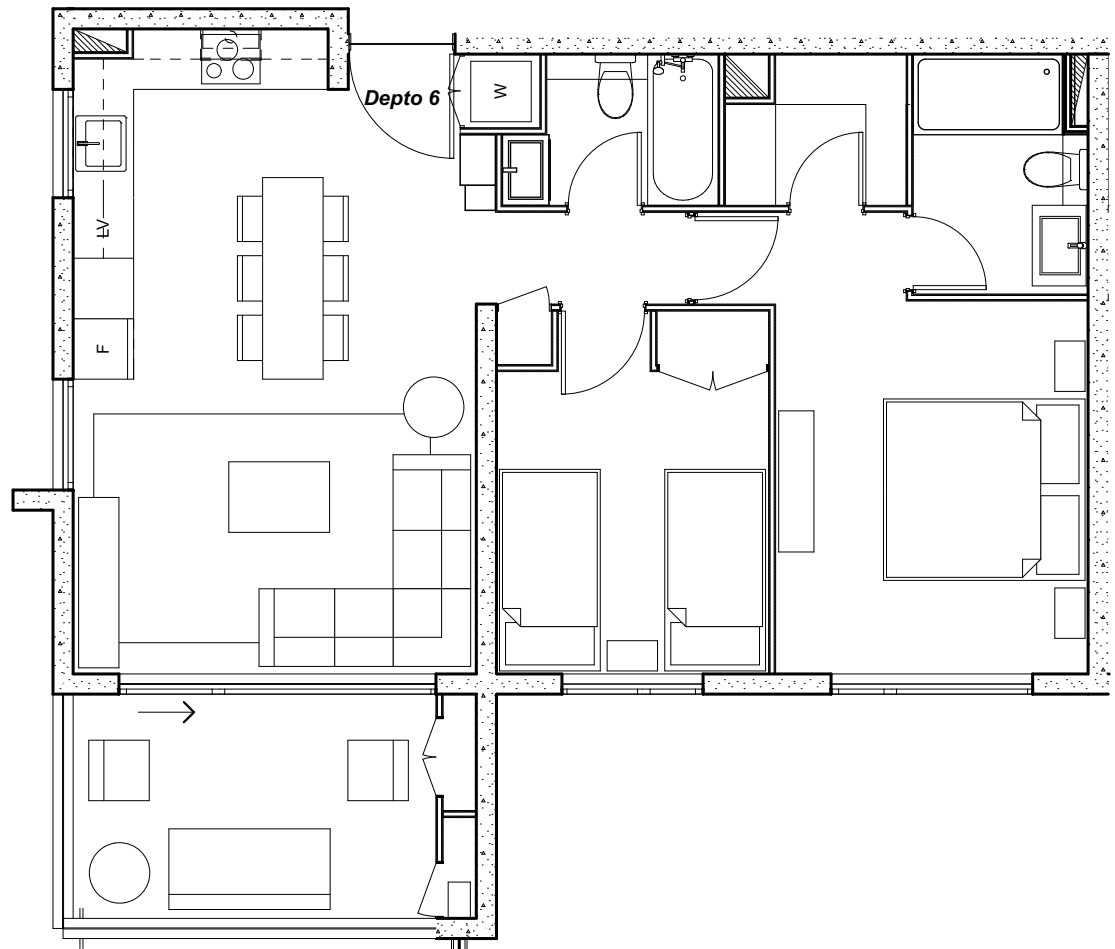
### Departamento

#### Tipo L

Sup. Util 65,50 m<sup>2</sup>

+ Terraza 10,18 m<sup>2</sup>

Total = 75,68 m<sup>2</sup>



**Preliminar**

Depto N° (26-36-46-56-66-76-86)